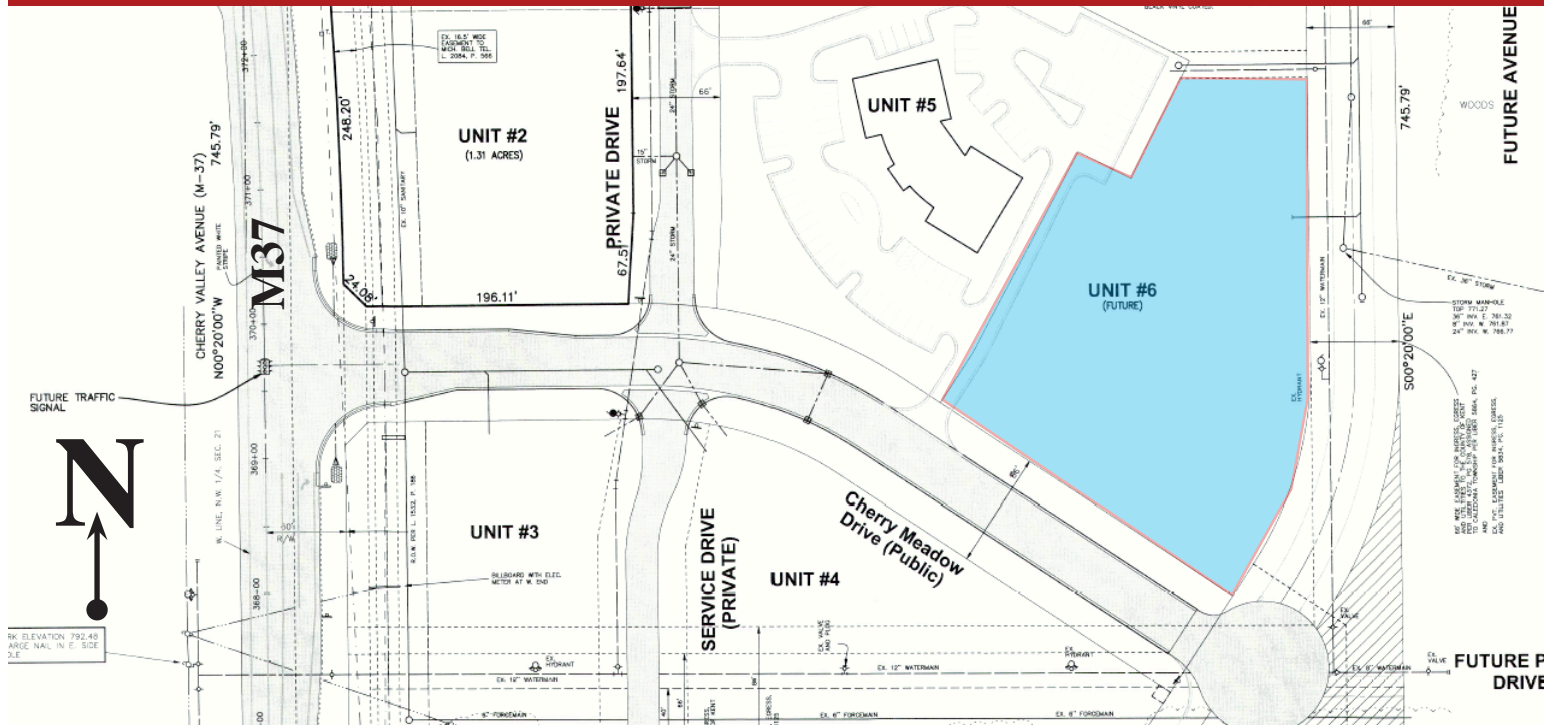




R E D S T O N E

# VACANT LAND FOR SALE

6505 Cherry Meadow Dr SE - Unit #6  
Caledonia, MI 49316



**\$299,000.00**  
PRICE

**2.45 +/-**  
ACRES

## UNIQUE OPPORTUNITY

Significant interest and energy is growing in Caledonia for new users and expansion by others. This new PUD is engaged in the Township's process to create a new East road development while encouraging the conversion of Cherry Meadow Dr. SE to a public road with a stop light at the intersection of M37 and Cherry Meadow Dr SE. Cherry Meadow Dr SE was constructed with that in mind and now is the time to push that agenda. Surrounding units within the overall PUD will also be developed as Medical/Office and Senior/Assisted Living. Perhaps free standing Retail at the entrance off M37 with a proposed traffic light.

## HIGHLIGHTS

- Utilities already in place
- Infrastructure in place
- Zoned: Commercial/Office PUD
- Join established medical businesses, West Michigan Dental Professionals and Hannapel Orthodontics
- Traffic Counts: 22,293 CPD
- Growing community within excellent school district, Caledonia Public Schools

## CONTACT:

Ross E. Pope, CDP, CCIM  
(616) 502.0238  
ross@redstonelive.com

Chad Clemens  
(616) 633.3836  
chad@redstonelive.com



R E D S T O N E





R E D S T O N E

# VACANT LAND FOR SALE

6505 Cherry Meadow Dr SE - Unit #6  
Caledonia, MI 49316



**CONTACT:**

Ross E. Pope, CDP, CCIM  
(616) 502.0238  
ross@redstonelive.com

Chad Clemens  
(616) 633.3836  
chad@redstonelive.com



R E D S T O N E